



# HESE Belt conveyor pulleys



Customised design and production  
of belt conveyor pulleys

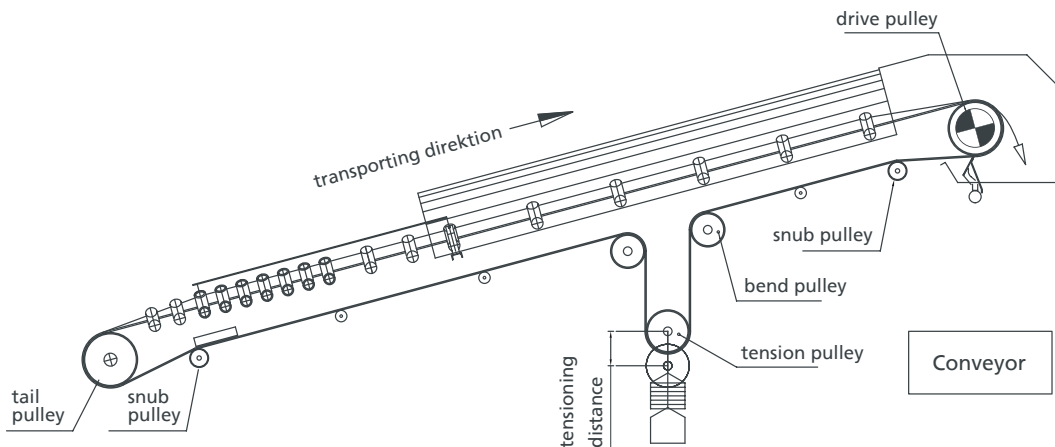
# Excellent running characteristics



## BELT CONVEYOR PULLEYS

Excellent running characteristics that are not even impaired by temperature or humidity and that can tolerate heavy duty, allow for a long product life cycle and turn our belt conveyor pulleys into an indispensable element in materials handling technology.

Our range of belt conveyor pulleys comprises all types that are needed for the operation of belt conveyors:



- drive pulleys
- tail pulleys & tension pulleys
- rod pulleys for excavator belts
- disc pulleys
- special designs



# Long product life cycle



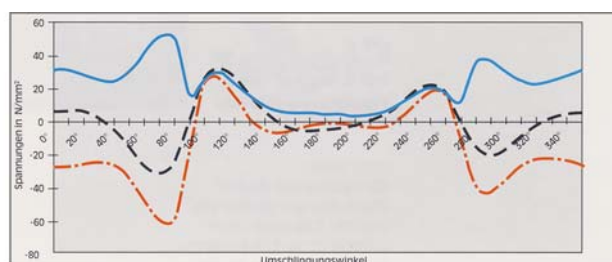
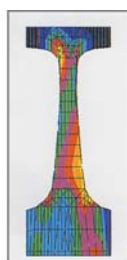
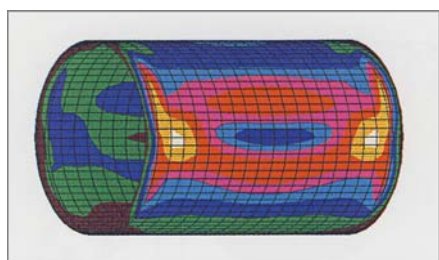
## WE DESIGN AND PRODUCE

- pulley diameters up to 2,500 mm
- pulley length up to 6,000 mm
- pulley for loads > 4,000 kN

Explosion protection acc. to ATEX guidelines for opencast and underground mining



## CALCULATION AND ENGINEERING WITH MODERN HARD- & SOFTWARE



Based on our experience and various tension- and deformation analyses carried out via FEM, we have developed special software that we use for the calculation and engineering of our belt conveyor pulleys. Our software ensures reliable dimensioning and design of technically and economically optimised belt conveyor pulleys.

## CUSTOMISED AND FROM A SINGLE SOURCE

We produce belt conveyor pulleys aligned to your requirements. Design and calculation are carried out individually and are dependent on the ambient conditions and environmental influences of the particular areas of application.

DIN EN ISO 9001 : 2008



DIN EN ISO 14001 : 2005



SCC\*\* : 2006



Explosion protection acc. to ATEX guidelines





Maschinenfabrik Hese GmbH | Magdeburger Straße 16a | 45881 Gelsenkirchen, Germany  
Tel.: +49 209 9 80 99 - 0 | Fax: +49 209 9 80 99 - 199 | Mail: [info@hese.de](mailto:info@hese.de) | [www.hese.de](http://www.hese.de)